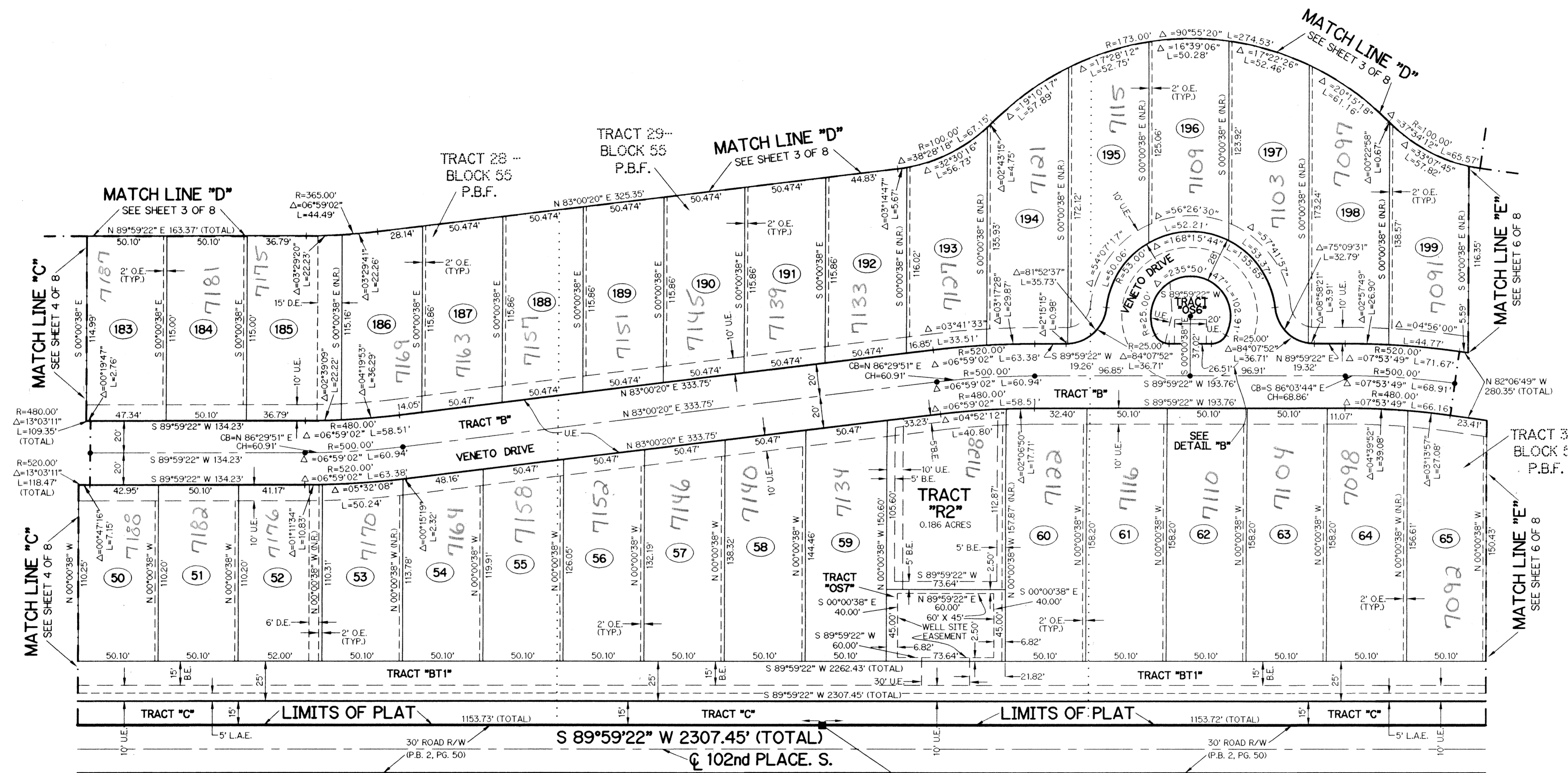


MIZNER FALLS PLANNED UNIT DEVELOPMENT

MIZNER FALLS

BEING A REPLAT OF TRACTS 1 THROUGH 4, BLOCK 55, LESS THE NORTH 75 FEET THEREOF, TRACTS 26 THROUGH 32 AND THE SOUTH 220 FEET OF TRACT 5, BLOCK 55, PALM BEACH FARMS COMPANY PLAT NO. 3 ACCORDING TO THE PLAT THEREOF RECORDED IN PLAT BOOK 2, PAGES 45 THROUGH 54 OF THE PUBLIC RECORDS OF PALM BEACH COUNTY, FLORIDA. SECTION 28, TOWNSHIP 45 SOUTH, RANGE 42 EAST, PALM BEACH COUNTY, FLORIDA.

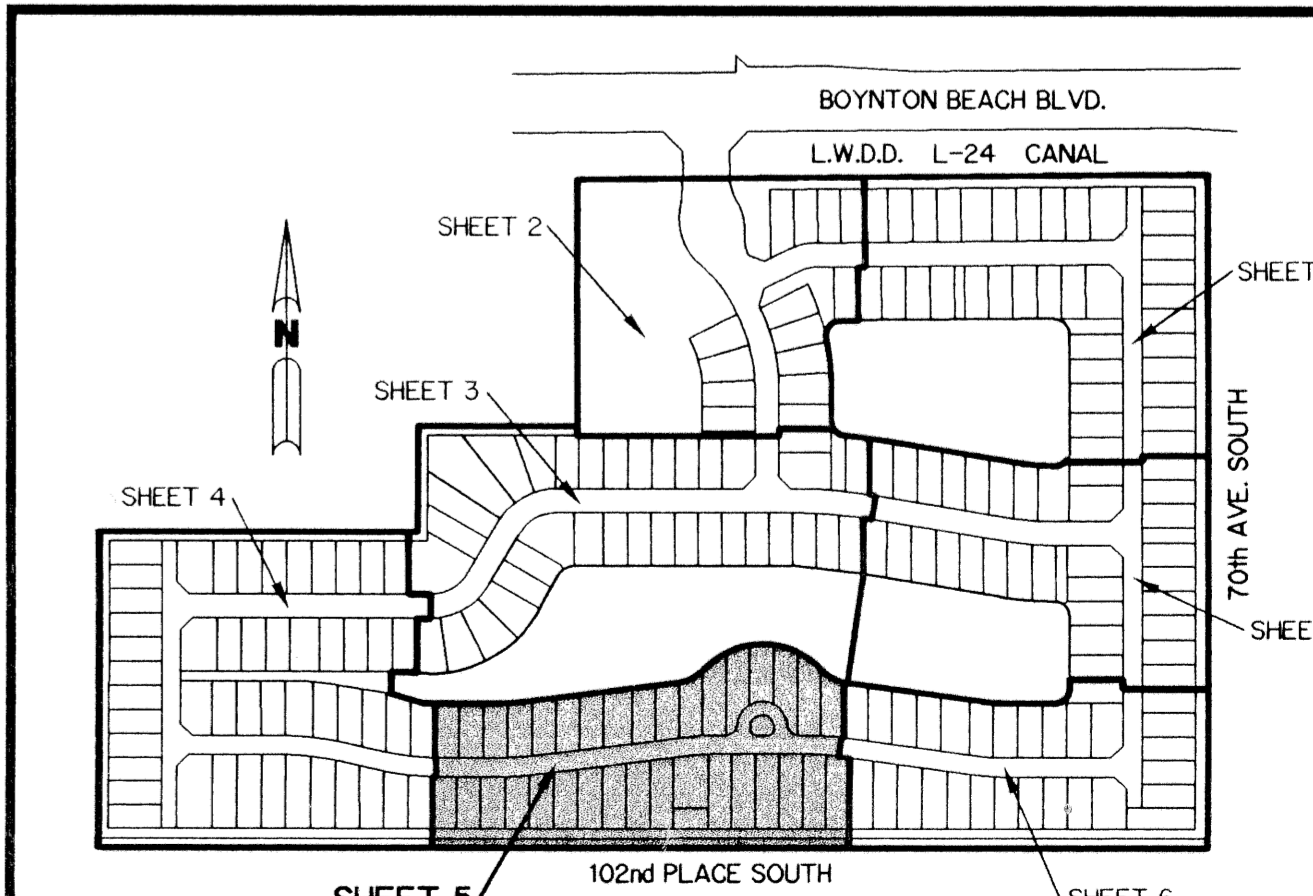
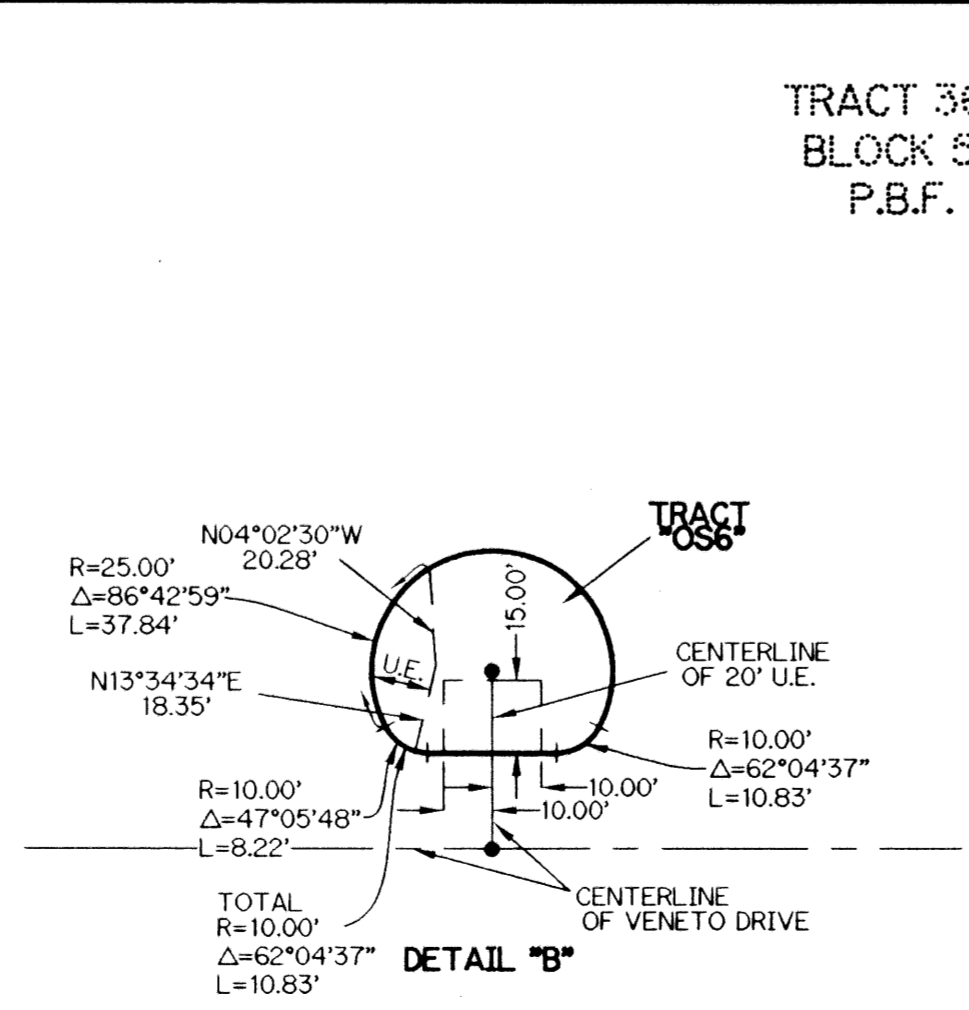
SHEET 5 OF 8 AUGUST, 2000



NOTE:
 COORDINATES SHOWN ARE GRID COORDINATES
 DATUM = NAD 83 (1998 ADJUSTMENT)
 ZONE = FLORIDA EAST ZONE
 LINEAR UNIT = U.S. SURVEY FEET
 COORDINATE SYSTEM 1983 STATE PLANE
 TRANSVERSE MERCATOR PROJECTION
 ALL DISTANCES ARE GROUND
 SCALE FACTOR = 1.0000277
 PLAT BEARING = S89°59'22"W
 GRID BEARING = S89°53'22"W
 BEARING ROTATION (PLAT TO GRID)
 00°26'00" COUNTER CLOCKWISE

- LEGEND:**
- - SET PERMANENT REFERENCE MONUMENT, LB-6674
 - - PERMANENT CONTROL POINT, PSM #4190
 - Δ - DELTA ANGLE
 - B.E. - BUFFER EASEMENT
 - C. - CENTERLINE
 - C.B. - CHORD BEARING
 - C.H. - CHORD LENGTH
 - D.B. - DEED BOOK
 - D.E. - DRAINAGE EASEMENT
 - L. - ARC LENGTH
 - L.A.E. - LIMITED ACCESS EASEMENT
 - L.M.A.E. - LAKE MAINTENANCE ACCESS EASEMENT
 - L.M.E. - LAKE MAINTENANCE EASEMENT
 - L.W.D.D. - LAKE WORTH DRAINAGE DISTRICT
 - N.R. - NOT RADIAL
 - N.T.S. - NOT TO SCALE
 - O.R.B. - OFFICIAL RECORD BOOK
 - P.B. - PLAT BOOK
 - P.B.F. - PALM BEACH FARMS COMPANY PLAT NO. 3 (P.B. 2, PGS. 45-54)
 - PGS. - PAGES
 - P.S.M. - PROFESSIONAL SURVEYOR AND MAPPER
 - R. - RADIUS
 - R/W - RIGHT-OF-WAY
 - S.T. - SURVEY TIE
 - U.E. - UTILITY EASEMENT
 - N 814602.8657 - DENOTES STATE PLANE COORDINATES
 - E 785753.1680

TRACT 37 -- BLOCK 55 P.B.F.
 TRACT 36 -- BLOCK 55 P.B.F.
 TRACT 35 -- BLOCK 55 P.B.F.



THIS INSTRUMENT PREPARED BY
 WILBUR F. DIVINE, P.S.M. 4190, STATE OF FLORIDA
 LAWSON, NOBLE AND WEBB, INC., LB-6674
 ENGINEERS PLANNERS SURVEYORS
 420 COLUMBIA DRIVE, SUITE 110
 WEST PALM BEACH, FLORIDA

DIVISION 91
 FLOOD MAP # 185A
 ZONING 33437
 QUAD # 50
 TAZ 958
 PUD NAME